



Lawrence County Chapter Officers

President: Tom Show
 Vice President: Beth Verterano
 Secretary: John Manna
 Treasurer: Eleanor DeAntonio

Lawrence County Chapter Board Members

Gary Kwolek - Sam Bernstine
 Nancy Lowry Orloff
 Debbie Wachter
 Gizelle Dean
 Webmaster: Anthony Scarnati



Do you have questions about upcoming events or about the Lawrence County Chapter?

Check out our website:
www.pslawrencecounty.org

Or Our Facebook Page



Penn State University Alumni
 Lawrence County Chapter

Or Contact Tom Show at
 724.856.2255

For other Penn State information, check out these websites:

Penn State - Shenango Campus
www.shenango.psu.edu

Penn State - Beaver Campus
www.beaver.psu.edu

Penn State Alumni Association
www.alumni.psu.edu

Penn State Athletics
www.gopsusports.com

Big Ten Athletic Conference
www.bigten.org

Meet Our 2023 Scholarship Winners!!

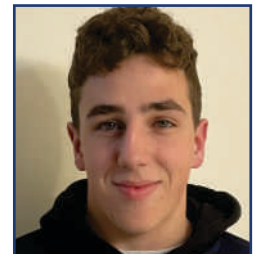
We wish them good luck as they start their new college life.



Reese Bintrim

Reese Bintrim, daughter of Jim and Kelly Bintrim. A Laurel High graduate, Reese will study Pre Med at the University Park campus with a focus on Dermatology, eventually entering medical school. Reese was a member of the Varsity Volleyball and Basketball teams, where she received multiple honors including WPIAL first team in volleyball and defensive & academic awards in basketball. She also participated in the Varsity L and SADD clubs, was a member of the National Honor Society and was chairman for the Annual Spring Blood Drive. Reese has worked the Annual Carnation Sale and completed the Spartan Park Cleanup in addition to volunteering in Laurel's Life Skills Classroom. She will be the 10th member of her family to attend Penn State.

Brady Cooper, son of Brian and Bobbi Lynn Cooper. A graduate of Laurel High School, Brady was a captain for Laurel's football team and was named first team all-conference at middle linebacker and tight end. Brady was President of Future Business Leaders of America's Laurel Chapter, where his business event won two years in a row at regional competition and advanced to state competition. He was also a member of student council, volunteered at Thanksgiving food drives, Project Hope, and a variety of other charities. Brady is very involved with Center Church, where he helps with mowing and trimming, volunteers at Vacation Bible School, Strawberry Socials and other church events and he creates the church PowerPoint every week. He served as Treasurer for the Varsity L Club and was a member of National Honor Society. Brady plans to study business after choosing Penn State over Bucknell, Slippery Rock, Washington & Jefferson and Westminster.



Brady Cooper



Hailey Gonzales

Hailey Gonzales, daughter of Jeffrey and Kelly Gonzales. Hailey graduated from New Castle High School where she was a member of National Honor Society, Student Council, Pennsylvania Junior Academy of Science, and Forensics/Public. Hailey also participated in academic games and the school newspaper, Eye of the Hurricane. She has volunteered in community activities such as planting flags on veterans' graves, food or blanket/clothes drives, Earth Day cleanups and setting up local events. She will attend the University Park campus to major in Psychology and hopes to become a Psychiatrist.

Janie Natale, daughter of Paula and Jim Natale. A graduate of Shenango High School, she will study to become a biomedical engineer at the University Park campus. Janie was an integral part of Shenango's Girls Basketball team where she learned communication, leadership and relationship skills that will last a lifetime. Janie was involved in many extracurricular activities, her favorite being the Spanish Club. She volunteered at numerous community organizations including I Can Bike Camp helping children with disabilities learn how to ride a bike.



Janie Natale



Suchi Patel

Suchi Patel, daughter of Parul and Dharmesh Patel. Another Shenango High School graduate, Suchi will attend the Harrisburg Campus to major in Accounting. She was a member of the National Honor Society, the National Society of High School Scholars, SADD, and the yearbook committee. Suchi also participated in many community events including food distribution at Holy Spirit Church, the NOW project, and helping at the annual Easter Egg Hunt, Fall Fest and Santa's Workshop at Shenango Park. Her future plans include becoming a CPA and owning her own firm. Suchi enjoys swimming and is certified in CPR. She is also fond of Indian dancing and painting.



PRESIDENT’S LETTER - by Tom Show

Hello Penn State Alumni Members and Friends,
Let me start by congratulating all five of our scholarship winners for 2023. It is very difficult for our committee to determine winners when the caliber of students applying is so high. This year our scholarships were (surprisingly) fully funded by the generosity of Terri and Robert Price in honor of their late daughter, Victoria N. Price, a Penn State graduate.

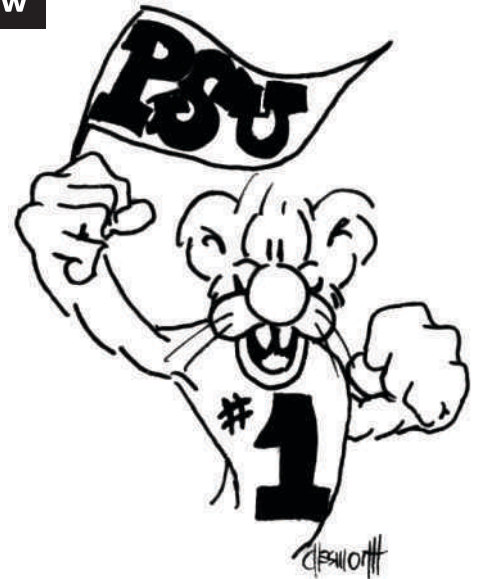
On August 2, we awarded five \$500 scholarships to students at our annual Freshman Sendoff Picnic at Pearson Park. In addition to the scholarships, we provided students who attended the picnic with a gift bag of school supplies. Other donations this year went to THON, the Penn State Shenango Alumni Society's Golf Scramble fundraiser, Pittsburgh Promise in memory of Franco Harris, and the Victoria N. Price Scholarship Fund at Penn State.

During the fiscal year 2022-2023, our local chapter sponsored various events, most of which were well attended. These included former Penn State president Graham Spanier's book-signing, a Paint N Sip fundraiser, a football watch party, our annual freshman sendoff picnic, and our major fundraiser with Mr. Neil Rudel, Managing Editor of the Altoona Mirror, who has covered Penn State sports for over 30 years.

For 14 years in a row, the Lawrence County Chapter has achieved the Alumni Associations' "Group of Distinction". We will continue to work hard to maintain this achievement.

I hope you are checking our Facebook page for information about the Alumni Association and our Chapter. If you have any ideas for fundraisers or have questions or something you would like us to do, please contact any officer or board member. They are listed on the front page. Also, if you know anyone who might be interested in becoming involved with our chapter (especially with tech skills) please have them contact me at showboat73@msn.com or 724-856-2255.

Sincerely,
Tom Show
Chapter President



**WATCH OUR FACEBOOK PAGE
FOR DETAILS OF UPCOMING
VIEWING PARTY & EVENTS!**

Penn State University Alumni Lawrence County Chapter



GROUP OF DISTINCTION 14 YEARS IN A ROW 2010 - 2023

Each group must complete the following to remain in good standing:

- Communication with members
- Individual group membership support and recruitment
- Members of the chapter/AIG board are all members of Alumni Association
- All outstanding debts paid in full

Group of Distinction must be in good standing and complete at least seven additional categories from list of 15 provided by Alumni Assoc.

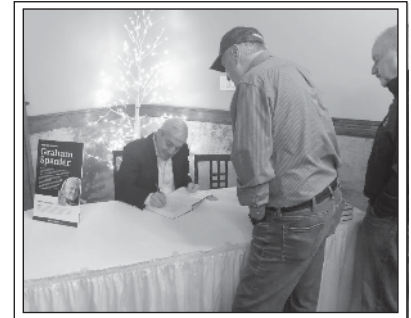


Victoria N. Price Scholarship Fund Golf Outing



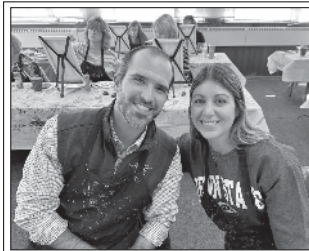
In support of the Victoria N Price Scholarship Fund at Penn State, current President Tom Show along with former chapter presidents Frank Augustine and Gary Kwolek and long time member Jim Book entered a team in the golf outing held July 15 at Avalon at Buhl Golf and Country Club. This fundraiser for her scholarship fund was hosted by Victoria's parents, Bob and Terri Price.

Former Penn State President Graham Spanier Book Signing



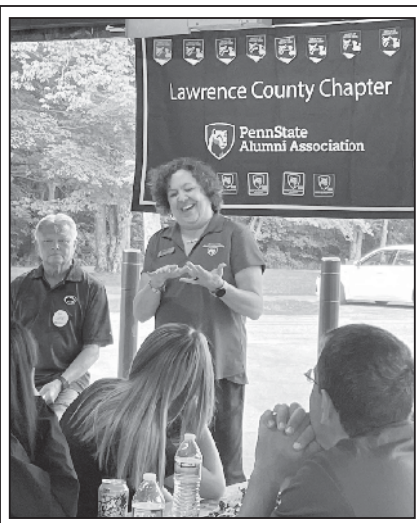
About 60 people attended as we hosted former Penn State President Graham Spanier for a book signing. This was a free event open to the public.

Paint & Sip Fundraiser



February 29th Fundraiser at Casey K's Kreations

Freshman Send Off



Annual freshman sendoff picnic at Pearson Park on August 1st. Congrats to our scholarship winners!

We Hosted Neil Rudel, Managing Editor of the Altoona Mirror



Neil Rudel has covered Penn State sports for over 30 years. Event was held at Gallo's Italian Villa in May. This was our major fundraising effort of the year.



PennState
Alumni Association
Lawrence County Chapter



MEMBER SURVEY

As a member of the Penn State Alumni Association, you are automatically a member of our local chapter – the Lawrence County Chapter. We would like your input on some of the things you would be willing to participate in the coming year. We'll be doing a winter fundraiser of some kind and a spring fundraising dinner in May of 2024.

Please take a few minutes to answer the following questions. Please respond with your answers to showboat73@msn.com or mail them to Tom Show, 3221 Elm Drive, New Castle, PA 16105.

1. Would you participate in a Paint N Sip sometime in Winter?
2. Would you attend football/basketball viewing parties?
3. What other events would you like us to consider, i.e. wine tastings, networking events, happy hours, Christmas party, etc., Bus to football or basketball game? These all would most likely incur a cost to attend as we are a non-profit organization. Buses are extremely expensive, so we would need to sell out the bus and game tickets.
4. Would you be interested in joining our board of directors or helping us in any way? We are especially in need of someone with social media skills and computer skills to produce catchy posts and reels, possibly rebuild our website, etc.
5. What is stopping you from becoming involved in your local chapter?

6. Would you attend an annual meeting to elect new officers?
7. Would you attend a local meeting with Steve Blake from the Office of Gift Planning at University Park to discuss options for those who may be contemplating gifting to the university (NOT A SOLICITATION)?
8. If you own a business, would you be willing to donate a gift basket to our basket raffle fundraising efforts at our annual Spring dinner?
9. Do you have any suggestions for a speaker for the Spring Dinner?

www.psu.lawrencecounty.com

Facebook: Penn State University Alumni Lawrence County Chapter

PennState
Alumni Association



**New Lion Perks (r) Discount
Program Included In
Alumni Association
Membership**

LionPerks (r) is an exclusive discount platform that helps you save money at many of your favorite national and local merchants.

It's completely free for all Penn State Alumni Association members, and you can access it on any device.

Enjoy access to thousands of discounts in 25 different categories, updated daily.

**Sign up or log in at
psaa.perkspot.com**

IGNITE THE FIGHT...

THON™ WEEKEND

2024

FEBRUARY 16-18

16,500 student volunteers, 700+ dancers, 46 hours of no sitting, no sleeping, dance marathon held in February every year. This year it is scheduled for Feb. 16-18, 2024.

Over 13.7 million dollars was raised in 2023 to support the Four Diamonds Fund. Since 1977 THON has raised approx. 203 million dollars. Hopefully you will support THON along with our chapter and its mission to support pediatric cancer patients and research.



**FOR DETAILS
VISIT
THON.ORG**



**PennState
Alumni Association
Lawrence County Chapter
3221 Elm Drive
New Castle PA 16105**

